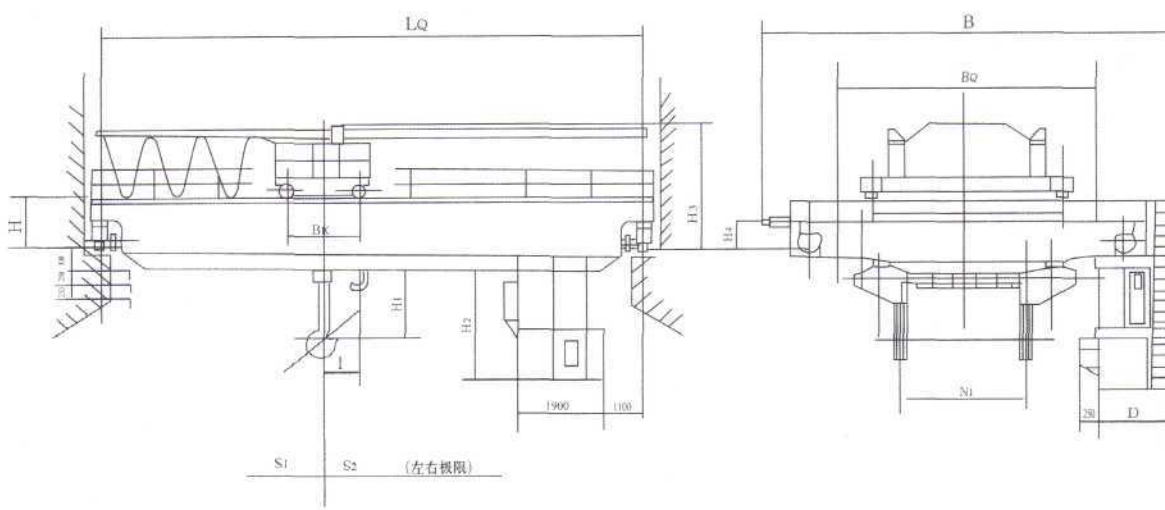


# QD 型 50/10 吨铸造起重机

QD Type of 50/10-Ton Casting crane



铸造起重机是冶炼车间的主要生产设备之一。在转炉车间用该起重机将从高炉车间运来的铁水倒入混铁炉及将混铁炉内的铁水或从高炉车间运来的铁水直接倒入转炉。在转炉或平炉车间，该起重机将炼钢炉中倾出的钢水在跨间进行连续铸造或供浇铸钢锭之用。该起重机设有独立驱动的主、副小车，主小车设置固定间距的龙门钩，吊运盛钢桶。副小车可用来倾翻盛钢桶或做其它辅助性的吊运作业。铸造起重机采用安全可靠的起升机构，并在司机室和车间显示出所吊物之重量。该机采用封闭型的偏轨箱形梁，因此，具有良好的垂直和水平刚性。

The casting crane smelts one of workshop main production equipment. The molten iron which will ship in from the blast furnace workshop pours into in the converter mill with this hoist crane the mixer and which will ship in from the blast furnace workshop pours into directly the mixer in molten iron or the molten iron the converter. In the converter or the siemensmartin plant, this hoist crane the molten steel which leans the steel-smelting furnace in cross between carries on using of the continuous casting or for the casting steel ingot. This hoist crane is equipped with the independent actuation the host, the vice-car, the main car establishment fixed spacing Dragon Gate hook, lifts the steel ladle. The vice-car may use for to pour crane uses safely reliable lifts the organization, and may demonstrated in the cab and the workshop hangs weight of the thing. This machine uses enclosed the leaning axle box beam, therefore, has good vertical and the horizontal rigidity.

## 技术规格 Technical Specification

|                                 |                         |                  |                             |                |      |      |                |                |                |                |      |                |      |                |                |
|---------------------------------|-------------------------|------------------|-----------------------------|----------------|------|------|----------------|----------------|----------------|----------------|------|----------------|------|----------------|----------------|
| 额定起重量 Cap.                      | 主起升 Main Lifting        | t                | 50                          |                |      |      |                |                |                |                |      |                |      |                |                |
|                                 | 副起升 Aux. Lifting        |                  | 10                          |                |      |      |                |                |                |                |      |                |      |                |                |
| 跨度 Span                         |                         | m                | 25                          |                |      |      |                |                |                |                |      |                |      |                |                |
| 起升高度 Lifting Height             | 主起升 Main Lifting        | m                | 12                          |                |      |      |                |                |                |                |      |                |      |                |                |
|                                 | 副起升 Aux. Lifting        |                  | 14                          |                |      |      |                |                |                |                |      |                |      |                |                |
| 速度 Speed                        | 主起升 Main Lifting        | m/min            | 7                           |                |      |      |                |                |                |                |      |                |      |                |                |
|                                 | 副起升 Aux. Lifting        |                  | 19                          |                |      |      |                |                |                |                |      |                |      |                |                |
|                                 | 小车运行 Trolley Travelling |                  | 39.62                       |                |      |      |                |                |                |                |      |                |      |                |                |
|                                 | 大桥运行 Bridge Travelling  |                  | 87.3                        |                |      |      |                |                |                |                |      |                |      |                |                |
| 电动机 Motor                       | 主起升 Main Lifting        | 型号/kW<br>Type/kW | YZR315M-10/75               |                |      |      |                |                |                |                |      |                |      |                |                |
|                                 | 副起升 Aux. Lifting        |                  | YZR280M-10/45               |                |      |      |                |                |                |                |      |                |      |                |                |
|                                 | 小车运行 Trolley Travelling |                  | YZR160M <sub>2</sub> -6/7.5 |                |      |      |                |                |                |                |      |                |      |                |                |
|                                 | 大桥运行 Bridge Travelling  |                  | YZR225M-8/22                |                |      |      |                |                |                |                |      |                |      |                |                |
|                                 | 总容量 Total Volume        |                  | kW                          | 171.5          |      |      |                |                |                |                |      |                |      |                |                |
| 自重 Dead-Weight                  | 小车 Trolley              | t                | 22.692                      |                |      |      |                |                |                |                |      |                |      |                |                |
|                                 | 起重机 Total Weight        |                  | 67.533                      |                |      |      |                |                |                |                |      |                |      |                |                |
| 常用大桥轨道型号 Steel Rail Recommended |                         | QU80             |                             |                |      |      |                |                |                |                |      |                |      |                |                |
| 主要尺寸及极限位置 (mm)                  |                         | L <sub>1</sub>   | B <sub>1</sub>              | B <sub>0</sub> | B    | H    | H <sub>1</sub> | H <sub>2</sub> | H <sub>3</sub> | H <sub>4</sub> | L    | N <sub>1</sub> | D    | S <sub>1</sub> | S <sub>2</sub> |
|                                 |                         | 4520             | 3110                        | 7270           | 8800 | 1070 | 3300           | 2010           | 3349           | 1134           | 1900 | 3620           | 1400 | 3400           | 3435           |

